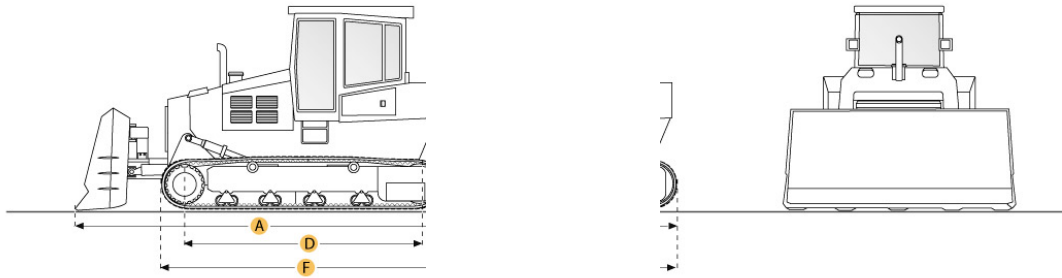


CATERPILLAR D7G LGP CRAWLER TRACTOR

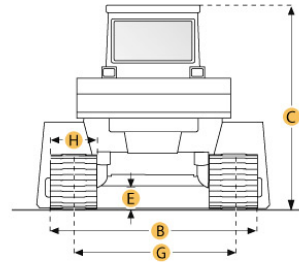


Dimensions

A. LENGTH W/ BLADE	18.7 ft in	5690 mm
B. WIDTH OVER TRACKS	10.9 ft in	3330 mm
C. HEIGHT TO TOP OF CAB	10.5 ft in	3200 mm
D. LENGTH OF TRACK ON GROUND	10 ft in	3050 mm
E. GROUND CLEARANCE	1.1 ft in	347 mm
F. LENGTH W/O BLADE	13.8 ft in	4220 mm

Undercarriage

G. TRACK GAUGE	7.2 ft in	2180 mm
H. STANDARD SHOE SIZE	33.9 in	860 mm



CATERPILLAR D7G LGP CRAWLER TRACTOR

Specification

Engine		
MAKE	Caterpillar	
MODEL	3408	
GROSS POWER	335 hp	249.8 kw
DISPLACEMENT	640.7 cu in	10.5 L
Operational		
OPERATING WEIGHT	52095.2 lb	23630 kg
FUEL CAPACITY	114.9 gal	435 L
Transmission		
TYPE	powershift	
NUMBER OF FORWARD GEARS	3	
NUMBER OF REVERSE GEARS	3	
MAX SPEED - FORWARD	6.2 mph	10 km/h
MAX SPEED - REVERSE	7.5 mph	12 km/h
Undercarriage		
GROUND CONTACT AREA	8153 in ²	5.3 m ²
STANDARD SHOE SIZE	33.9 in	860 mm
NUMBER OF TRACK ROLLERS PER SIDE	7	
TRACK GAUGE	7.2 ft in	2180 mm
Standard Blade		
WIDTH	13.7 ft in	4170 mm
Dimensions		
LENGTH W/O BLADE	13.8 ft in	4220 mm
LENGTH W/ BLADE	18.7 ft in	5690 mm
WIDTH OVER TRACKS	10.9 ft in	3330 mm
HEIGHT TO TOP OF CAB	10.5 ft in	3200 mm
LENGTH OF TRACK ON GROUND	10 ft in	3050 mm
GROUND CLEARANCE	1.1 ft in	347 mm