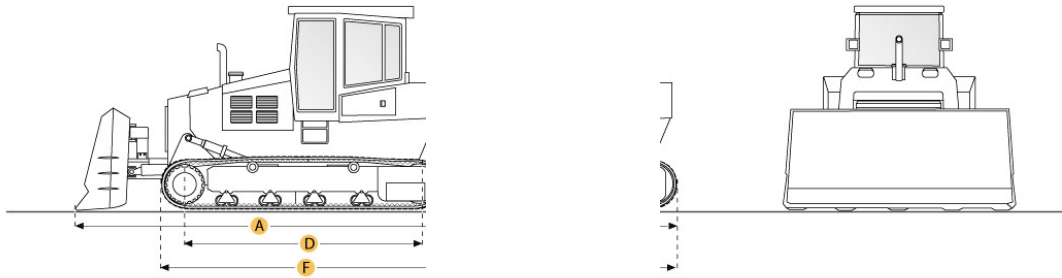


KOMATSU D21P-7E CRAWLER TRACTOR

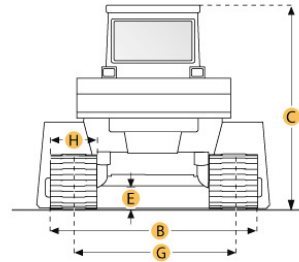


Dimensions

A. LENGTH W/ BLADE	11.1 ft in	3385 mm
B. WIDTH OVER TRACKS	6.6 ft in	2000 mm
C. HEIGHT TO TOP OF CAB	8.2 ft in	2500 mm
D. LENGTH OF TRACK ON GROUND	5.5 ft in	1685 mm
E. GROUND CLEARANCE	1.2 ft in	355 mm
F. LENGTH W/O BLADE	8.4 ft in	2560 mm

Undercarriage

G. TRACK GAUGE	4.9 ft in	1490 mm
H. STANDARD SHOE SIZE	20.1 in	510 mm



KOMATSU D21P-7E CRAWLER TRACTOR

Specification

Engine		
MAKE	Komatsu	
MODEL	4D94E	
GROSS POWER	40 hp	29.8 kw
POWER MEASURED @	2450 rpm	
DISPLACEMENT	169.3 cu in	2.8 L
NUMBER OF CYLINDERS	4	
Operational		
OPERATING WEIGHT	8972.8 lb	4070 kg
Transmission		
TYPE	HS	
NUMBER OF FORWARD GEARS	2	
NUMBER OF REVERSE GEARS	2	
Undercarriage		
STANDARD SHOE SIZE	20.1 in	510 mm
TRACK GAUGE	4.9 ft in	1490 mm
Standard Blade		
WIDTH	8.4 ft in	2560 mm
HEIGHT	23.2 in	590 mm
Dimensions		
LENGTH W/O BLADE	8.4 ft in	2560 mm
LENGTH W/ BLADE	11.1 ft in	3385 mm
WIDTH OVER TRACKS	6.6 ft in	2000 mm
HEIGHT TO TOP OF CAB	8.2 ft in	2500 mm
LENGTH OF TRACK ON GROUND	5.5 ft in	1685 mm
GROUND CLEARANCE	1.2 ft in	355 mm